

AUSTRALIA & NEW ZEALAND CRUISE  
**AUCKLAND TO MELBOURNE**

VOYAGE NUMBER #SM230104012

DEPARTURE	DURATION	SHIP
JANUARY 4, 2023	12 DAYS	SILVER MUSE

**FROM: A\$9,990**

WITH ⌚ 10% EARLY BOOKING BONUS  
AND 🛫 INCLUDED BUSINESS CLASS AIR

FARES SHOWN ARE PER GUEST



## Offers for this Cruise

All offers are subject to availability.



### SAIL WITH US

When you refer a friend who has never sailed with Silversea, and they book a new voyage, you BOTH enjoy A\$650 savings per suite. Promotion ends May 31, 2021.



### EARLY BOOKING BONUS

Book and pay in full by May 31, 2021 and save 10%



### AUSTRALIA AND NEW ZEALAND - ALL INCLUSIVE

Enjoy Included Business Class Air Roundtrip + Included Transfers and Shore Excursions



### SPECIAL SINGLE FARES

Solo travellers enjoy single supplements at only 25%

# Itinerary & Excursions

🚢 9 PORTS    🏴 2 COUNTRIES

They might be close geographically but the two great nations of Australia and New Zealand are so far apart in every other way. Experience the very best of these fantastic countries on this lovely 12-day voyage that take in stunning beauty, rugged shores, fascinating history and some very fine wine to boot! A fusion of big cities – Wellington, tartan flare – Dunedin, rolling vineyards – Hobart, and days at sea this voyage is one the best bites of the antipodes we offer.



View more about this cruise:

<https://www.silversea.com/destinations/australia-new-zealand-cruise/auckland-to-melbourne-sm230104012.html>

To view all terms and conditions please visit: <https://www.silversea.com/terms-and-conditions.html>



## 01 Auckland

NEW ZEALAND

WED, JANUARY 4  
DEPARTURE 19:00



## 02 Bay of Islands

NEW ZEALAND  
9 EXCURSIONS

THU, JANUARY 5  
08:00 - 17:00



## 03 Tauranga

NEW ZEALAND  
12 EXCURSIONS

FRI, JANUARY 6  
08:00 - 16:00



## 04 Napier

NEW ZEALAND  
8 EXCURSIONS

SAT, JANUARY 7  
12:00 - 19:00



## 05 Wellington

NEW ZEALAND  
10 EXCURSIONS

SUN, JANUARY 8  
09:30 - 19:00



## 06 Akaroa

NEW ZEALAND  
10 EXCURSIONS

MON, JANUARY 9  
08:00 - 18:00



## 07 Dunedin (Port Chalmers)

NEW ZEALAND  
10 EXCURSIONS

TUE, JANUARY 10  
08:00 - 18:00



## 08 Day at sea

INTERNATIONAL WATERS

WED, JANUARY 11



## 09 Day at sea

INTERNATIONAL WATERS

THU, JANUARY 12

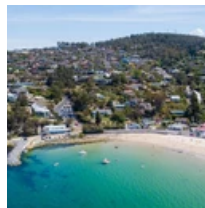


## 10 Hobart, Tasmania

AUSTRALIA

FRI, JANUARY 13

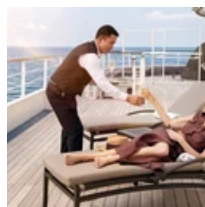
ARRIVAL 18:00 



## 11 Hobart, Tasmania

AUSTRALIA  
14 EXCURSIONS

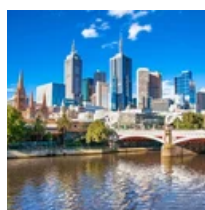
SAT, JANUARY 14  
DEPARTURE 18:00



## 12 Day at sea

INTERNATIONAL WATERS

SUN, JANUARY 15



## 13 Melbourne

AUSTRALIA

MON, JANUARY 16  
ARRIVAL 07:00

The excursions are provided as a sample of what may be offered on this voyage and are subject to change. We invite guests to visit [my.silversea.com](https://www.silversea.com) 180 days prior to sailing for the most updated information.

## Suites & Fares

Silversea's oceanview suites are some of the most spacious in luxury cruising. All include the services of a butler thanks to the highest service ratio at sea and almost all have a private teak veranda so that you can breathe in the fresh sea air by merely stepping outside your door. Select your suite and Request a Quote - guests who book early are rewarded with the best fares and ability to select their desired suite.



### Owner's Suite

Up to 129 m<sup>2</sup> including veranda

**FROM: A\$32,580**

WITH ⌚ 10% EARLY BOOKING BONUS  
AND 🚪 INCLUDED BUSINESS CLASS AIR



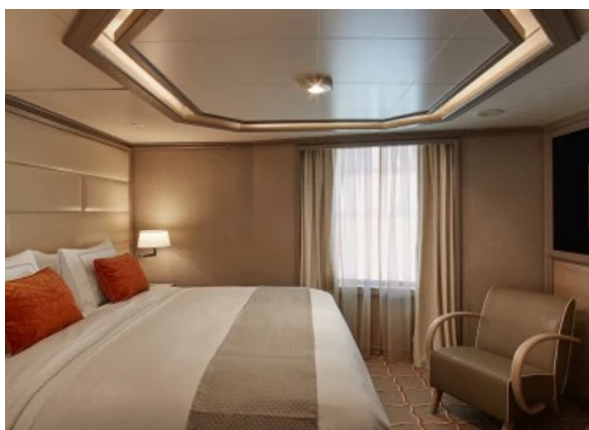
### Grand Suite

Up to 183 m<sup>2</sup> including veranda

**FROM: A\$24,300**

WITH ⌚ 10% EARLY BOOKING BONUS  
AND 🚪 INCLUDED BUSINESS CLASS AIR



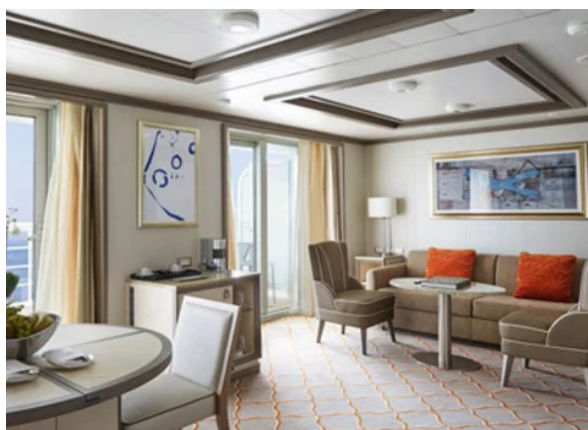


## Royal Suite

Up to 142 m<sup>2</sup> including veranda

**FROM: A\$29,160**

WITH ⌚ 10% EARLY BOOKING BONUS  
AND 🚪 INCLUDED BUSINESS CLASS AIR

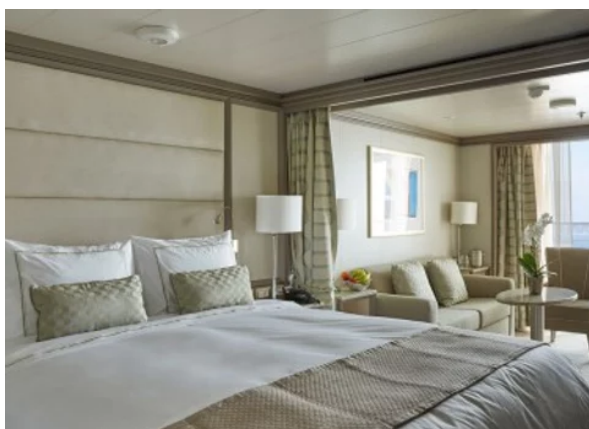


## Silver Suite

Up to 104 m<sup>2</sup> including veranda

**FROM: A\$19,080**

WITH ⌚ 10% EARLY BOOKING BONUS  
AND 🚪 INCLUDED BUSINESS CLASS AIR



## Deluxe Veranda Suite

Up to 36 m<sup>2</sup> including veranda

**FROM: A\$12,960**

WITH ⌚ 10% EARLY BOOKING BONUS  
AND 🚪 INCLUDED BUSINESS CLASS AIR



## Superior Veranda Suite

Up to 36 m<sup>2</sup> including veranda

**FROM: A\$12,510**

WITH ⌚ 10% EARLY BOOKING BONUS  
AND 🚪 INCLUDED BUSINESS CLASS AIR



## Classic Veranda Suite

Up to 36 m<sup>2</sup> including veranda

**FROM: A\$12,060**

WITH ⌚ 10% EARLY BOOKING BONUS  
AND 🚪 INCLUDED BUSINESS CLASS AIR

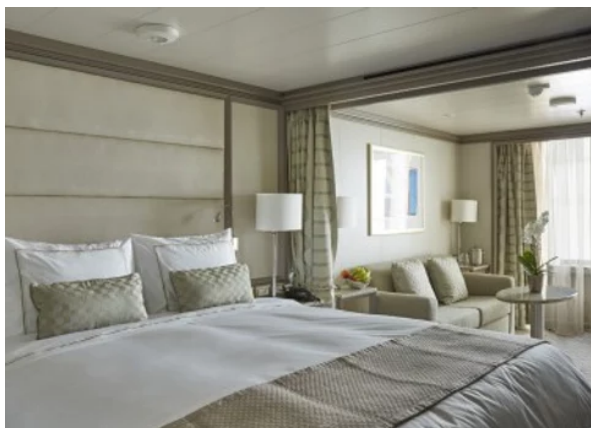


## Panorama Suite

Up to 31 m<sup>2</sup>

**FROM: A\$10,980**

WITH ⌚ 10% EARLY BOOKING BONUS  
AND 🚪 INCLUDED BUSINESS CLASS AIR



## Vista Suite

Up to 31 m<sup>2</sup>

**FROM: A\$9,990**

WITH ⌚ 10% EARLY BOOKING BONUS  
AND 🚪 INCLUDED BUSINESS CLASS AIR



## Included in the cruise fare

*Fares shown are per Guest*

- **Business Class Air Roundtrip**
- **Transfers (between airport and ship)**
- **1 Shore Excursion per port, per day**
- Spacious suites – over 80% with private verandas
- Butler service in every suite
- Unlimited Free Wifi
- Personalised service – nearly one crew member for every guest
- Multiple restaurants, diverse cuisine, open-seating dining
- Beverages in-suite and throughout the ship, including champagne, select wines and spirits
- 24-hour dining service
- Onboard entertainment
- Complimentary transportation into town in most ports
- Onboard gratuities

## Ship - Silver Muse

Delivered in spring of 2017, *Silver Muse* was built by Fincantieri and at 40,700 grt accommodates 596 guests. Representing an exciting evolution of Silver Spirit, Silver Muse redefines ultra-luxury ocean travel - enhancing the small-ship intimacy and spacious all-suite accommodations that are the hallmarks of the Silversea experience. *Silver Muse* significantly raises the bar in the ultra-luxury cruise market with a wealth of enhancements to the onboard experience, while satisfying the uncompromising requirements for comfort, service, and quality of the world's most discerning travellers.

Ship Details: **<https://www.silversea.com/ships/silver-muse.html>**